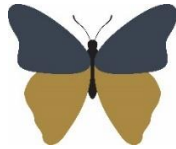


Welshampton Church of England Primary School



**Growing together
in strength, love and wisdom, we shine.**

**Newsletter
Friday 17th January 2025**

Message from the Head

It has been a busy week across the Federation this week, as Newtown Primary School have been visited by Ofsted Inspectors on Tuesday and Wednesday.

A big thank you to Mrs Liley, Miss Jones and Mrs Hordern for supporting Newtown in their roles as Federation Deputy Headteacher, Federation SENDCo and Office Manager respectively.

The process was again an intense few days but it really was a great opportunity for everyone's professional development and highlighted again their value to Welshampton. Thank you to all.

Brilliant Bikeability

Meanwhile, at Welshampton, our Year 6 children have been enjoying riding their bicycles! They have had an enjoyable and challenging couple of days completing their level 1 and 2 Bikeability Awards. This included learning observation skills, road positioning, and navigating parked cars on the main road. The Bikeability team praised the behaviour and determination of all the children. It is a great opportunity for all to learn how to ride their bikes properly and most importantly be safe on the roads in the local area. Well done, Year 6!



Executive Headteacher: Mr Ben Crompton

Address: Welshampton Church of England Primary School, Welshampton, Shrewsbury SY12 0PG **Telephone:** 01948710325
Twitter: @WelshamptonSch **Email:** admin@welshampton.shropshire.sch.uk **Website:** www.welshamptonceprimary.co.uk

Sunrise Club

A reminder that we run our Breakfast Provision each morning from 7:45am. To give the children the best start to their day we have a range of menu choices for the children!



SUNRISE CLUB MENU

Available from 7.45am – 8.45am daily

- A variety of cereals
- Wholemeal toast with a choice of butter or jam
- Yoghurts

Refreshments

- Milk
- Water
- Fresh juice such as apple, orange, cranberry & tropical

Specials

- Scrambled egg on wholemeal toast
- Cheddar Cheese on wholemeal toast
- Toasted bagels with cream cheese
- Variety of toasties
- Baked beans on wholemeal toast
- Pancakes with sliced banana and blueberries
- Boiled eggs
- Assorted omelettes
- Bacon Sandwiches

Sunset Clubs

A reminder of the themes for the after-school clubs that we offer at school. These are bookable on the Teachers2Parents App.

Monday - Muddy Monday

Tuesday - Games

Wednesday - Arts & Crafts & Multisports

Thursday - Cooking

Friday - Chill Out & Sport

Attendance This Week

Willow Class 94% ★★★★★

Beech Class 96% ★★★

Oak Class 96% ★

Weekly average: 95%

Attendance Ladder

How close is your child to 100%?

0 days off school	100%	Perfection
Equates to 2 days off school each year	99%	Excellent
Equates to 5 days off school each year	97%	Good
Equates to 10 days off school each year	95%	Slight Concern
Equates to 20 days off school each year	90%	Concerned
Equates to 30 days off school each year	85%	Very Concerned

If you need with getting your child into school, please contact Mrs Hordern, our Pastoral Lead. Thank you.

Year 6 London Trip



As in previous years, we are excited to share that once more the Year 6 children will be visiting London for the day later in the year. More information will, be shared next week, but the date for the diary is Wednesday 2nd April.

Shining Stars of the Week Willow Class

Ava for her amazing writing and being so brave!

Beech Class

Evie for her amazing handwriting.

Oak Class

Robin for being brilliant during Bikeability!

Outside Achievements

Ivy for gaining her Stage 2 swimming badge.

Have a wonderful weekend!

Your sincerely,

Mr Crompton.

Key School Dates

March

13th – 14th March

Year 3 & 4 Residential Trip
Condover

April

2nd April

Year 6 London Trip

May

12th – 15th May

Year 6 SATs Week

June

8th – 13th June

Phonics Screening Check Year
4 Multiplication

20th June

Sports Day from 9:30am

**'Children thrive
at this school.'**

Ofsted 2024

Places available

Contact us to arrange a visit T: 01948 710325 E: admin@welshampton.shropshire.sch.uk W: welshamptonceprimary.co.uk

Executive Headteacher: Mr Ben Crompton

Address: Welshampton Church of England Primary School, Welshampton, Shrewsbury SY12 0PG **Telephone:** 01948710325
Twitter: @WelshamptonSch **Email:** admin@welshampton.shropshire.sch.uk **Website:** www.welshamptonceprimary.co.uk