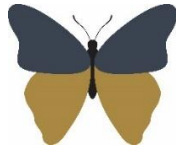


# Welshampton Church of England Primary School



**Growing together  
in strength, love and wisdom,  
we shine.**

**Newsletter  
Friday 25<sup>th</sup> October 2024**

---

## Message from the Head

As we come to the end of this very busy – and long – half term, it was lovely to see the children still full of so much energy at the Half Term Disco this evening!

A huge thank you, as always, to the Fabulous Friends who delivered once more with refreshments, hotdogs, and top-quality DJ!



*(The picture doesn't quite do justice to the energy that was in the village hall this evening!)*

## Newhampton Journey Day

This week was our first ever Newhampton Journey Day as all the children and staff ventured over to Newtown. The children enjoyed a carousel of activities throughout the day which centred on one of our core values, 'strength'.

The day began with Rev Clayton sharing the bible story of David and Goliath before both pupil and staff tug-of-war action! The children, in mixed groups, then moved

through the school in activities which included the bleep test, singing, self-reflection and an escape room activity.

Following a picnic lunch on the running track we all then came together to be joined by a local Paralympic Table Tennis star via Zoom who offered inspiration, experience and advice to all our children. However, the highlight of the day was how all of the children behaved and integrated with each other throughout the day. As a whole Federation staff, we were all very proud of the children. Well done all.

We look forward to enjoying a termly Journey Day each year and especially look forward to welcoming Newtown staff and children to Welshampton in the summer.



## Ellesmere College Triangular

Our U9 and U11 Football Teams were invited to play in a triangular tournament at Ellesmere College on Monday.

The U9s drew 3-3 with Ellesmere College and then lost 1-0 to Newtown.

Whilst our U11s, lost 1-0 vs Ellesmere College A before beating Ellesmere College B 4-0 and Newtown 3-1.

Very well done all and thank you to those parents who were able to come and support the teams.



**Executive Headteacher:** Mr Ben Crompton

**Address:** Welshampton Church of England Primary School, Welshampton, Shrewsbury SY12 0PG **Telephone:** 01948710325  
**Twitter:** @WelshamptonSch **Email:** admin@welshampton.shropshire.sch.uk **Website:** [www.welshamptonceprimary.co.uk](http://www.welshamptonceprimary.co.uk)

### Beech Class Ironworks Visit



Beech Class this week visited The British Ironworks to see some real-life iron sculptures after reading *The Iron Man* in Literacy. They had a wonderful time and were even given free passes to return with their families!

### Christmas Dates

To make you aware, key Christmas Dates are now on the calendar including our Christmas Performance at 5:00pm on Wednesday 18<sup>th</sup> December and the end of term Christmas Service on Friday 20<sup>th</sup> December.

Both will be held at church and parents, as always, will be very much welcome.



Hello from the **Family Information Service** (FIS for short).

Our job is to give you the info and resources you need to help your family life run a little smoother. We can help with:

- Childcare - finding it and advice on paying for it
- Local baby and toddler groups
- Events, clubs, activities, and fun things to do in the school holidays, for all ages
- Getting parenting and family support
- Finding health and wellbeing support

We cover everything and anything to do with family life, so if you have a question, chances are we'll be able

to help, or if we can't, we'll point you in the direction of someone who can.

**Follow us on social media for all the latest news and info.**



[www.shropshire.gov.uk/fis](http://www.shropshire.gov.uk/fis)

### Pupil Premium Funding

Pupil Premium funding is available for eligible families, which provides additional support for children in our school. This funding can be crucial in enhancing educational opportunities and resources for your child.

The Pupil Premium is available to families who receive certain benefits. The eligibility criteria include the following:

1. **Income Support** - If your family is in receipt of Income Support.
2. **Income-Based Job Seekers Allowance** - If you are receiving this allowance.
3. **Child Tax Credit** - If your family earns less than £16,190 per annum and is not receiving Working Tax Credit.
4. **Universal Credit** - If your household's taxable earnings are less than £7,400 per annum.
5. **The Guarantee element of State Pension Credit** - If your family qualifies under this criterion.
6. **Support under Part VI of the Immigration and Asylum Act 1999** - If applicable.

If you believe that you meet any of the above criteria, I encourage you to apply for Pupil Premium funding. To apply, you can complete the form attached to this email or alternatively, please contact our school office, and we would be happy to assist you.

We encourage all eligible families to apply for this funding, as it directly benefits your child and helps our school provide additional resources to enhance their learning experience.

**Executive Headteacher:** Mr Ben Crompton

**Address:** Welshampton Church of England Primary School, Welshampton, Shrewsbury SY12 0PG **Telephone:** 01948710325  
**Twitter:** @WelshamptonSch **Email:** admin@welshampton.shropshire.sch.uk **Website:** [www.welshamptonceprimary.co.uk](http://www.welshamptonceprimary.co.uk)



**Stars of the Week  
Strength**

*'Be strong and courageous! Do not be afraid or discouraged.'* Joshua 1:9

**Willow Class**

Bobby for showing great strength in Science.

**Beech Class**

Amelia for showing great strength due to her positive attitude all week!

**Oak Class**

Jack for showing great strength and determination in Maths.

**Outside Achievements**

Congratulations to Keira for achieving her Brownies Mindfulness badge and sharing her useful tips for us to practice.

Have a wonderful half term break!  
Your sincerely, Mr Crompton.

**Key School Dates**

**December**

12<sup>th</sup> December  
18<sup>th</sup> December

20<sup>th</sup> December

Christmas Jumper Day  
Christmas Performance  
5:00pm Parents Welcome  
Christmas Church Service  
9:15am Parents Welcome

**January**

6<sup>th</sup> – 8<sup>th</sup> January

Year 5 & 6 Residential Trip  
Robinwood

**March**

13<sup>th</sup> – 14<sup>th</sup> March

Year 3 & 4 Residential Trip  
Condoover

**May**

12<sup>th</sup> – 15<sup>th</sup> May

Year 6 SATs Week

**June**

8<sup>th</sup> – 13<sup>th</sup> June

Phonics Screening Check  
Year 4 Multiplication Che

**Welshampton Church of England Primary School**

# Nursery

## Spaces Available

from 3 years old  
7.45am to 5.30pm

- ✓ Science and Discovery
- ✓ Art and Crafts
- ✓ Music and Movement
- ✓ Outdoor Play

We are dedicated to providing a nurturing and stimulating environment where your child will grow, learn and develop.

Find out more here:

[www.welshamptonprimary.co.uk](http://www.welshamptonprimary.co.uk)

[admin@welshampton.shropshire.sch.uk](mailto:admin@welshampton.shropshire.sch.uk)

Welshampton C of E Primary School

To arrange a visit call 01948 710 325

**Executive Headteacher:** Mr Ben Crompton

**Address:** Welshampton Church of England Primary School, Welshampton, Shrewsbury SY12 0PG **Telephone:** 01948710325  
**Twitter:** @WelshamptonSch **Email:** [admin@welshampton.shropshire.sch.uk](mailto:admin@welshampton.shropshire.sch.uk) **Website:** [www.welshamptonprimary.co.uk](http://www.welshamptonprimary.co.uk)