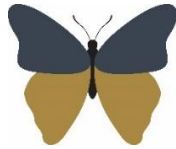


# Welshampton Church of England Primary School



**Growing together  
in strength, love and wisdom,  
we shine.**

**Newsletter  
Friday 27<sup>th</sup> September 2024**

---

## Message from the Head

As this week has demonstrated, we aim to continue the number of sporting - and other - events our children participate in.

In line with our commitment to enhancing opportunities, we have developed a comprehensive year-long events programme for the children which we are very much looking forward to.

We have also been able to facilitate access to the Ellesmere College minibus – when available and useful - to reduce transport costs. This will not only save us thousands of pounds a year, but it will also allow us to attend more extra-curricular events.

Regrettably, we cannot take every child to every event; and often the school needs to select a team. This means not every child can attend every event which may lead to disappointment for some children.

There are no strict criteria for selection, as it depends on various factors, but we always aim to strike a balance between being competitive and inclusive.

We will endeavour to provide all children with opportunities, but unavoidably occasional disappointment is inevitable. We encourage parents to view this as a valuable learning experience for children as they prepare for future challenges.

## Upcoming Events

On the afternoon of Wednesday October 2nd all Year 3 and Year 4 children will attend a football event at Ellesmere Rangers. Further details have been circulated.

## Girls Football

Yesterday I, along with Mr Tinsley, had the pleasure of taking our Girls Football Team to Oswestry School to take part in a football event against several other schools.

I was incredibly proud of our team. Despite playing against much larger schools and often much bigger children, Team Welshampton came 6<sup>th</sup> out of 12 schools.

This was a great achievement and reflected the attitude of the team which played with real determination and effort. We were very proud of you all! Well done.



## General Consent

A request to the last few parents to please complete the General Consent forms which were emailed out last week – you should have also received reminders. We ask that all parents complete this as soon as possible on the School App. If you are having trouble accessing, please speak to the office who will be more than happy to help you.

## Open Day Success

It was lovely welcoming families to Welshampton early this week for our first Open Day event of the year. If you know of any parents who are considering a place at Welshampton, please encourage them to get in touch with either the school or myself personally, and I'll be more than happy to show them everything we have to offer here at Welshampton.

**Executive Headteacher:** Mr Ben Crompton

**Address:** Welshampton Church of England Primary School, Welshampton, Shrewsbury SY12 0PG **Telephone:** 01948710325  
**Twitter:** @WelshamptonSch **Email:** admin@welshampton.shropshire.sch.uk **Website:** [www.welshamptonceprimary.co.uk](http://www.welshamptonceprimary.co.uk)

## Operation Christmas Child

This year, through a campaign called Operation Christmas Child, run by the UK charity Samaritan's Purse, Welshampton Primary School is joining with thousands of other schools up and down the country in wrapping, packing, and sending shoeboxes full of gifts – things like cuddly toys, games, balls, hats, gloves and scarves, stationery, and hygiene items – to children in need around the world.

This was launched earlier today in school and we look forward to the Charity Ministers running the campaign moving forwards.

### Attendance

#### This week

Willow Class 93% ★★  
Beech Class 98% ★★★  
Oak Class 92% ★

#### Average 94%

Our whole target is 97%

## Shining Stars of the Week

### Willow Class

Tate for working hard on phonics and letter formation

### Beech Class

Zac for amazing contribution in his work

### Oak Class

Martha for her amazing first big write

### Class Dojo Champs

#### Willow Class

Ava, Mabel, Oliver and Tate

#### Beech Class

James, Seren and Sophia

#### Oak Class

Archie, Connie and Jessica

### Outside Achievements

Many congratulations to two swimmers this week! Firstly, Maisie on gaining her 5m and Level 2 Swimming awards and also Mila on gaining her 10 meters certificate in swimming

Have a wonderful weekend!

Your sincerely,

Mr Crompton.

### Key School Dates

#### October

2<sup>nd</sup> October

7<sup>th</sup> October

14<sup>th</sup> October

15<sup>th</sup> October

22<sup>nd</sup> October

23<sup>rd</sup> October

24<sup>th</sup> October

Year 3/4 Football Tournament

Harvest Festival

Parents Welcome

Parents Evening

Parents Evening

Newhampton Journey Day

U9/U11 Football Tournament

Ellesmere College

Beech Class Ironworks Trip

#### January

**Executive Headteacher:** Mr Ben Crompton

**Address:** Welshampton Church of England Primary School, Welshampton, Shrewsbury SY12 0PG **Telephone:** 01948710325

**Twitter:** @WelshamptonSch **Email:** admin@welshampton.shropshire.sch.uk **Website:** [www.welshamptonceprimary.co.uk](http://www.welshamptonceprimary.co.uk)



6<sup>th</sup> – 8<sup>th</sup> January Year 5 & 6 Residential Trip  
Robinwood

**March**

13<sup>th</sup> – 14<sup>th</sup> March Year 3 & 4 Residential Trip  
Condover

**May**

12<sup>th</sup> – 15<sup>th</sup> May Year 6 SATs Week

**June**

8<sup>th</sup> – 13<sup>th</sup> June Phonics Screening Check  
Year 4 Multiplication Check



Welshampton Church of England Primary School

# Nursery Spaces Available

from 3 years old  
7.45am to 5.30pm

- ✔ Science and Discovery
- ✔ Art and Crafts
- ✔ Music and Movement
- ✔ Outdoor Play

We are dedicated to providing a nurturing and stimulating environment where your child will grow, learn and develop.

Find out more here:

 [www.welshamptonceprimary.co.uk](http://www.welshamptonceprimary.co.uk)

 [admin@welshampton.shropshire.sch.uk](mailto:admin@welshampton.shropshire.sch.uk)

 Welshampton C of E Primary School

To arrange a visit call 01948 710 325



**Executive Headteacher:** Mr Ben Crompton

**Address:** Welshampton Church of England Primary School, Welshampton, Shrewsbury SY12 0PG **Telephone:** 01948710325  
**Twitter:** @WelshamptonSch **Email:** admin@welshampton.shropshire.sch.uk **Website:** [www.welshamptonceprimary.co.uk](http://www.welshamptonceprimary.co.uk)