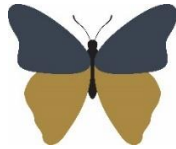


# Welshampton Church of England Primary School



Growing together  
in strength, love and wisdom,  
we shine.

Newsletter  
Friday 24<sup>th</sup> May 2024

## Message from the Head

It has been a very busy week at Welshampton as we arrive at the end of the first summer half term. A big well done to all the children for all their efforts within the classroom and outside of it and thank you to our team of staff who work tirelessly for the benefit of all our children. All thoroughly deserve a lovely break and I look forward to seeing everyone on Tuesday 4<sup>th</sup> June.

## The Greatest Show

Today has been a big day in the Welshampton calendar with children informed of their parts in The Greatest Show! Performances will be on Tuesday 16<sup>th</sup> July at 1.30pm – 3.00pm and 5.30pm to 7.00pm. I'm sure it will be 'The Greatest Show!'

## Journey Day

We thoroughly enjoyed our 2<sup>nd</sup> 'Journey Day' today focusing on our rules 'Be Ready, Be Respectful, Be Safe.' Throughout the morning we thought about how these rules help us in and out of school to be the very best we can. We let our lights shine in the afternoon creating lanterns and Sports Day Banners.



Executive Headteacher: Mr Ben Crompton

Address: Welshampton Church of England Primary School, Welshampton, Shrewsbury SY12 0PG Telephone: 01948710325  
Twitter: @WelshamptonSch Email: admin@welshampton.shropshire.sch.uk Website: [www.welshamptonceprimary.co.uk](http://www.welshamptonceprimary.co.uk)

## PD Day

A reminder that Monday 3<sup>rd</sup> June is a PD Day therefore the children will return to school on Tuesday 4<sup>th</sup> June.

## Year 4 Footballers Wanted

### PREES JFC UNDER 9S FOOTBALL TEAM

NEW PLAYERS REQUIRED 24-25 SCHOOL YEAR - Y4'S

JOIN US AT 1730 ON FRIDAY  
14TH JUNE TO MEET THE  
COACHES AND TEAM

Training: Thursday/Friday evenings (TBC) on Astro  
pitch. Matches: Sundays

Prees Junior Football Club, Brades Road,  
Prees, SY13 2DX



Contact James 07595120675

## Special Educational Needs Newsletter

If your child has SEN, please see the latest newsletter. The newsletter aims to provide easy access to key information for SEND families, as well as an opportunity for parent carers to hear from each other about their experiences.

<https://content.govdelivery.com/accounts/UKSHROPS HIRE/bulletins/39c6455>

## Club News

Next half term the Sports Club on a Friday will be ATHLETICS on our new sports track!

## Attendance

Willow Class 100% ★★★★★  
Beech Class 100% ★★★★★  
Oak Class 99% ★

Average for this week 99%  
Our whole target is 97%

Fantastic effort all!

## Class Dojo Class Champions

### Willow Class

Bobby, Ivy & Zac

### Beech Class

Rosie, Zoe & Henry

### Oak Class

Evelyn C, Zain & Elise

**Shining Stars of the Week**  
**Willow Class**

Bridgette for working so hard on her 'Big Write'.

**Beech Class**

Sophia for working so much more independently.

**Outside Achievements**

Theo O has been awarded a medal for his fantastic football.

Henry has achieved his 'purple' grading in Mixed Martial Arts

Meghan came first in a gymnastics competition

Jack has been awarded a medal and a trophy from the U9 Whitchurch Rugby Club for a great season.

Theo L has achieved his Astrologer, International and Tae-kwon-do badges from Ellesmere Cub

And congratulations to Will, Theo and Ava who were selected to play in the Frankton U11 Cricket team against Wem at the weekend.



Have a wonderful half term break!

Yours sincerely,  
Mr Ben Crompton

**Key School Dates**

**June**

3<sup>rd</sup> June

4<sup>th</sup> June

6<sup>th</sup> June

21<sup>st</sup> June

PD Day

Children Return to School

Greek Day

Sports Day

**July**

4<sup>th</sup> July

19<sup>th</sup> July

19<sup>th</sup> July

Move Up Day

Year 6 Leavers Service 9am

Break Up for Summer

A colorful poster for a May Half Term activity. The title is 'May Half Term Activity' in multi-colored letters, followed by 'Seeing is Believing' in large black letters. The dates are 'Monday 27th - Friday 31st May' in red, and the time is '1pm - 2.30pm' in blue. The text describes the activity: 'Create your own basic kaleidoscope to make patterns and learn their history. Play with optical illusions. Compare the eyes of different animals over time and solve the mystery of each animal eye stage. Recommended age 4 - 11 years.' The price is '£4.50 per accompanied child' and 'Booking essential'. It says 'Book online' and provides the website 'www.shropshirehillsdiscoverycentre.co.uk'. There is a cartoon illustration of a pair of large yellow eyes. At the bottom, it says 'Shropshire Hills Discovery Centre' and 'The Home of Grow Cook Learn'. Contact information includes 'info@shropshirehillsdiscoverycentre.co.uk', '01588 676060', 'School Road, Craven Arms SY7 9RS', and 'Grow Cook Learn, a registered charity: 1158795'.

**Executive Headteacher:** Mr Ben Crompton

**Address:** Welshampton Church of England Primary School, Welshampton, Shrewsbury SY12 0PG **Telephone:** 01948710325  
**Twitter:** @WelshamptonSch **Email:** admin@welshampton.shropshire.sch.uk **Website:** [www.welshamptonceprimary.co.uk](http://www.welshamptonceprimary.co.uk)