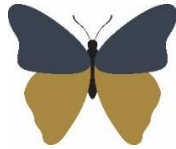


# Welshampton Church of England Primary School



**Growing together  
in strength, love and wisdom,  
we shine.**

**Newsletter  
Friday 17<sup>th</sup> May 2024**

---

## **Message from the Head**

This week has seen our fabulous Year 6 children complete their SATs (Standard Assessment Tests). These are national tests which all children complete before moving on to Key Stage 3 education.

It is a week which requires resilience, stamina and determination and our children have demonstrated all these qualities throughout. Taking six tests over four days was no mean feat, and everyone should be so proud of their efforts. Well done Year 6!

## **Journey Day**

### **Growing Together in Strength, Love and Wisdom, We Shine**

Today, we had our first 'Journey Day' at school, focusing on our core values of strength, love, and wisdom. The event was led by our House Captains, and the children participated in a variety of activities. To celebrate the value of 'Strength', the children reflected on the story of 'Daniel in the Lion's Den' and then enjoyed some fun 'Tug of War' activities on the school field. The gift of love was symbolised by creating paper hearts to represent God's constant presence and love. We also looked at the parable of the wise and foolish builders as an example of God's wisdom. They learned that if a person builds their life on the Word of God, they are building on a strong foundation.

The staff and children have had a great day working with different children, celebrating our school values.

A huge thank you to Mrs Liley for organising!

## **Grayling House**



## **Brimstone House**



## **Peacock House**



## **Playing Field Update**

I am pleased – and relieved - to say that the school field will be seeded tomorrow. This is about 6 weeks later than planned due to the incessant rainfall we've had throughout Spring. However, it was important we waited until the time was right to ensure that we get a playing surface for the children that we can be proud of. We now hope that the warm and slightly wet weather continues to supercharge the grass growth!

## **Headlice**

Please be aware that we have had a small headlice outbreak in the school this week. Please have a check and do what you need to do... thank you.

**Executive Headteacher:** Mr Ben Crompton

**Address:** Welshampton Church of England Primary School, Welshampton, Shrewsbury SY12 0PG **Telephone:** 01948710325  
**Twitter:** @WelshamptonSch **Email:** admin@welshampton.shropshire.sch.uk **Website:** [www.welshamptonceprimary.co.uk](http://www.welshamptonceprimary.co.uk)

### Parent Code of Conduct

We have got a wonderfully supportive Parent Body at Welshampton and we are keen to preserve that.

I have attached our Parent Code of Conduct to the newsletter for your perusal and ask that mutual respect is maintained when speaking with school staff. Thank you.

### School Meal Debts

We fully understand and greatly appreciate that many parents keep a close eye on their School Money balance and make regular, timely payments.

The school wishes to avoid a situation which allows parents to accrue large amounts of debt for school meals which they may then find difficult to clear. It is very time consuming for the school's office staff to chase parents for payment by phone call, text message or in person.

The school will occasionally need to decide whether or not a child should be refused a meal in school if no payment has been made. Ultimately, school is no different to any other café/restaurant and meals taken must be paid for.

School meals must be paid for in advance of meals being taken. All payments are made online through School money. Meals may be paid for on a daily, weekly, half termly or termly basis. The minimum payment accepted for meals is £2.50. Children will not be provided with a school meal unless it is paid for, except those that are entitled to universal or free school meals.

If a parent/carer genuinely forgets to pay in advance, the school may grant a debt allowance of up to £5.00 per child. However, this debt must be paid immediately on request before any further meals are provided.

If debts are incurred, then the school budget has to pay for them. This means that money which should be spent on the children's education is used to pay for debts incurred by parents/carers. Every parent/carer will agree that this is unacceptable, and we request you give this your full support

The Free School Meals (FSM) system is there for parents of children of all ages (even KS1 children who are entitled to UFSM) to claim if they are in receipt of certain benefits. Parents can apply for FSM using a secure, confidential online form at:

[www.shropshire.gov.uk/free-school-meals](http://www.shropshire.gov.uk/free-school-meals)

All the information you need to decide if you are eligible and to apply for free school meals can be found here: [www.shropshire.gov.uk](http://www.shropshire.gov.uk)

### Embrace Holiday Club

As the May Half Term fast approaches, Embrace are thrilled to share exciting news about our upcoming holiday clubs hosted by The Embrace Group. These sporty and fun-filled clubs will take place at two fantastic locations: Meole Brace C of E Primary School in Shrewsbury and Shifnal Primary School in Shifnal.

#### Holiday Club Highlights:

- Age Group: Suitable for children in years 1 to 7.
- Activities: Our clubs feature a range of activities meticulously planned and led by our qualified sports coaches and teachers.
- Sports Galore: Kids can enjoy a variety of sports, including Dodgeball, Football, Tag Rugby, Basketball, Cricket, Rounders, Hockey, and other engaging games.

#### Booking Information:

To secure a spot for your child and ensure they have a blast during the May Half Term, simply follow the link below for more details and to complete the booking process.

<https://mailchi.mp/7628d1a9bad8/greenacres-fsm-booking-information-17814679>

### Newtown Job Vacancies

**SS24/047 Kitchen Assistant/Driver**, 17.5HPW, Newtown Primary School, Wem, Shropshire, SY4 5NU. Closing 26/05/2024.

**SS24/1035 Cleaning Assistant**, 10.54HPW, Newtown Primary School, Newtown, Wem, SY4 5NU. Closing 26/05/2024.

Click on the links below for more information:

<https://www.shireservices.co.uk/job-vacancy/664487cf9e3cf/Kitchen-AssistantDriver-175HPW-Newtown-Primary-School-Wem-Shropshire-SY4-5NU-SS24047>

<https://www.shireservices.co.uk/job-vacancy/664474a42be8e/Cleaning-Assistant-1054HPW-Newtown-Primary-School-Wem-SY4-5NU-SS241035>

**Executive Headteacher:** Mr Ben Crompton

**Address:** Welshampton Church of England Primary School, Welshampton, Shrewsbury SY12 0PG **Telephone:** 01948710325  
**Twitter:** @WelshamptonSch **Email:** admin@welshampton.shropshire.sch.uk **Website:** [www.welshamptonceprimary.co.uk](http://www.welshamptonceprimary.co.uk)

### Class Dojo Class Champions

#### Willow Class

Adam, Maisie and Ethan

#### Beech Class

Jack, Martha, Zoe

#### Oak Class

Emily O, Grace, George

### Shining Stars of the Week

#### Willow Class

Elara for always being such a wonderful friend.

#### Beech Class

Luke P for showing some real maturity in class this week.

#### Oak Class

All of our wonderful Year 6 children for working so hard during SATs week.

### Outside Achievements

Will R has been awarded 'Coaches Player' of the Season playing for U9 rugby at Whitchurch

Luke Di was awarded 'Runner up Coaches Player' of the season in rugby also playing for U9 rugby at Whitchurch

Freddie L has been awarded 'Coaches Player' of the Season playing for U9 rugby at Oswestry and a medal for representing the team throughout the season. Freddie has also been awarded his Astrologer and International badge in Cubs.

Martha has been awarded two awards in gymnastics.

Oskar has achieved a trophy and medal for his commitment and participation in the U9 Whitchurch Rugby team

Adam medal for his commitment and participation in the U7 Whitchurch Rugby team

Keira has achieved her brownie Promise and an 'African' badge.

Have a wonderful weekend!

Yours sincerely,  
Mr Ben Crompton

**Executive Headteacher:** Mr Ben Crompton

**Address:** Welshampton Church of England Primary School, Welshampton, Shrewsbury SY12 0PG **Telephone:** 01948710325  
**Twitter:** @WelshamptonSch **Email:** admin@welshampton.shropshire.sch.uk **Website:** [www.welshamptonceprimary.co.uk](http://www.welshamptonceprimary.co.uk)



Welshampton CE Primary School  
**Nursery Now Open**  
Places available from 3 Years

Contact us to arrange a visit T: 01948 710325  
E: admin@welshampton.shropshire.sch.uk  
W: welshamptonceprimary.co.uk

7:45am to 5:30pm  
Let Your Light SHINE

### Key School Dates

#### May

24<sup>th</sup> May

Break Up for Half Term

#### June

3<sup>rd</sup> June

PD Day

4<sup>th</sup> June

Children Return to School

#### July

19<sup>th</sup> July

Break Up for Summer



**May Half Term Activity**  
**Seeing is Believing**  
Monday 27<sup>th</sup> - Friday 31<sup>st</sup> May  
1pm - 2.30pm

Create your own basic kaleidoscope to make patterns and learn their history. Play with optical illusions. Compare the eyes of different animals over time and solve the mystery of each animal eye stage. Recommended age 4 - 11 years.

£4.50 per accompanied child  
Booking essential  
Book online



 [www.shropshirehillsdiscoverycentre.co.uk](http://www.shropshirehillsdiscoverycentre.co.uk)

 Shropshire Hills Discovery Centre  
The Home of Grow Cook Learn

info@shropshirehillsdiscoverycentre.co.uk  
01588 676060  
School Road, Craven Arms SY7 9RS  
Grow Cook Learn, a registered charity: 1158795



SHREWSBURY  
HIGH SCHOOL

GDST  
GIRLS' DAY SCHOOL TRUST

## An Evening with

Louise Minchin

Hear the story of the fearless adventures  
of an extraordinary woman

Wednesday 16th October 2024

DOORS OPEN AT 6.45PM FOR A 7.00PM START

The New Hall, Town Walls,  
Shrewsbury, SY1 1TN



Refreshments and book signing

Tickets Adults £20 | Students £10 | SHS Students £5  
Available from School Office and Eventbrite. Email: [g.parish@shr.gdst.net](mailto:g.parish@shr.gdst.net)  
[shrewsburyhigh.gdst.net](http://shrewsburyhigh.gdst.net)



## SHROPSHIRE HILLS DISCOVERY CENTRE PRESENTS *Matilda The Musical*



PG

**WEDNESDAY 29TH MAY**  
**FILM STARTS AT 5PM**

Adult £6.00 | Child £4.00 | Family £18.00

Booking essential, book online



[www.shropshirehillsdiscoverycentre.co.uk](http://www.shropshirehillsdiscoverycentre.co.uk)

Free themed crafts and  
refreshments available to  
purchase in the cafe from 4pm.



01588 676 060

School Road, Craven Arms SY7 9RS  
Grow Cook Learn, a registered charity: 1158795



FLICKS  
ON  
STICKS

**Executive Headteacher:** Mr Ben Crompton

**Address:** Welshampton Church of England Primary School, Welshampton, Shrewsbury SY12 0PG **Telephone:** 01948710325  
**Twitter:** @WelshamptonSch **Email:** [admin@welshampton.shropshire.sch.uk](mailto:admin@welshampton.shropshire.sch.uk) **Website:** [www.welshamptonceprimary.co.uk](http://www.welshamptonceprimary.co.uk)