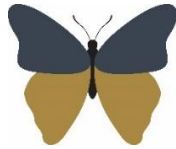


Welshampton Church of England Primary School



**Growing together
in strength, love and wisdom,
we shine.**

**Newsletter
Friday 10th May 2024**

Message from the Head

Earlier this week, I was pleased to share with you all the final report from our recent Ofsted Inspection. Available to view by following this link: www.welshamptonceprimary.co.uk/serve_file/26242843

The report is testament to the hard work of all the staff, our wonderful children and the fantastic support we enjoy from our parents.

Thank you all for supporting the school and its staff on the journey from 'requires improvement' to 'good' and I am sure you will agree, the report confirms what a fantastic school we are all so proud of.

Year 6 SATs

Our Year children have been working incredibly hard in the lead up to their SATs next week. From Monday to Thursday the children will complete reading, maths and spelling & punctuation tests as their primary school journey starts to come to an end. All tests will take place in the morning so we ask that children arrive promptly at the start of the school day.

As always, we view SATs as a chance for our Year 6 children to show-off everything that they have learnt over the course of their primary education and to set foundations for the move into secondary education. We are incredibly proud of all the children and SATs results will not define who they are or their achievements. But we wish them all the best and just ask that they do their very best. Good luck!

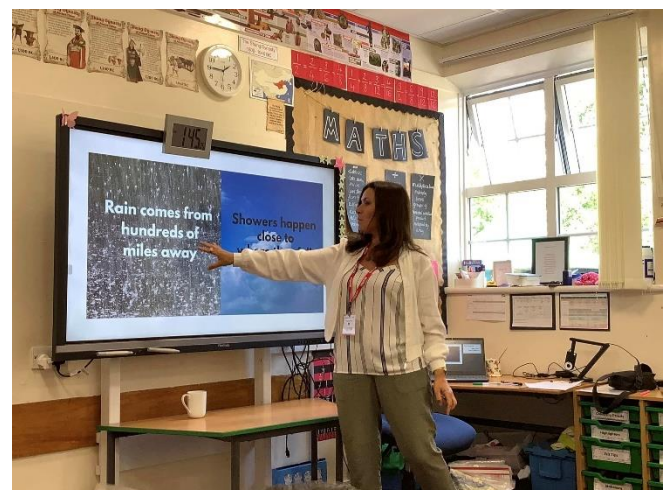
Celebrity Weather Forecaster Visit



Yesterday, we welcomed TV weather forecaster, meteorologist and author, Clare Nasir, to school to talk to Kestrel Class as part of their work 'Water & Weather' topic.



Clare has worked on television for 28 years and is as passionate now, as she was then, about what happens in our skies and in our world. It was fantastic to welcome her to our school and the children thoroughly enjoyed learning all about the weather.



Executive Headteacher: Mr Ben Crompton

Address: Welshampton Church of England Primary School, Welshampton, Shrewsbury SY12 0PG **Telephone:** 01948710325
Twitter: @WelshamptonSch **Email:** admin@welshampton.shropshire.sch.uk **Website:** www.welshamptonceprimary.co.uk

300 Club May Winners

The May draw was completed at school on 3rd May and the winners are as follows:

£50 Andrea Davies (26)
£10 Frank Davies (79)
£10 Rachel Ross (205)
£10 Joan Tudor Watson (104)

Congratulations all!

School Census Day

Next Thursday is our school census day when the government collect data about our school. This information impacts our next year's funding and so we would like to ensure Welshampton Primary School is in receipt of the maximum amount possible to future proof the success of the school and give our children the best possible resources and staffing.

In order to achieve this, we are serving a special lunch for children to enjoy. The menu is attached. All children in Willow Class and children eligible for free school meals will have a school dinner prepared for them, if your child does not normally have school meals this is a great opportunity for them to try having a school meal.

If you think you may be eligible for free school meals, please ask at the school office or you can apply at www.shropshire.gov.uk free-school-meals



Online Safety

Now, more than ever, it is important that we keep our children safe online. The NSPCC is offering free online safety parent workshops online. For more information, please follow the link.

www.nspcc.org.uk/keeping-children-safe/online-safety/free-online-safety-group-workshops/

Hot Weather

It has been a long time coming, but with the weather this week, can I remind you to send your children into school with a water bottle and a hat if you feel it necessary. We request that all sunblock is applied before the children come to school.

The warmer weather also means children take to take jumpers and cardigans off at play and lunchtimes. Please ensure clothing is labelled to prevent a mass build up of our lost property collection!

Embrace Holiday Club

As the May Half Term fast approaches, Embrace are thrilled to share exciting news about our upcoming holiday clubs hosted by The Embrace Group. These sporty and fun-filled clubs will take place at two fantastic locations: Meole Brace C of E Primary School in Shrewsbury and Shifnal Primary School in Shifnal.

Holiday Club Highlights:

- Age Group: Suitable for children in years 1 to 7.
- Activities: Our clubs feature a range of activities meticulously planned and led by our qualified sports coaches and teachers.
- Sports Galore: Kids can enjoy a variety of sports, including Dodgeball, Football, Tag Rugby, Basketball, Cricket, Rounders, Hockey, and other engaging games.

Booking Information:

To secure a spot for your child and ensure they have a blast during the May Half Term, simply follow the link below for more details and to complete the booking process.

<https://mailchi.mp/7628d1a9bad8/greenacres-fsm-booking-information-17814679>

Weekly Attendance

Willow Class - 100% ★★★★★
Beech Class - 95% ★★★
Oak Class - 95% ★★★

Average = 97%

Our school target is 97%. Well done everyone!

Executive Headteacher: Mr Ben Crompton

Address: Welshampton Church of England Primary School, Welshampton, Shrewsbury SY12 0PG **Telephone:** 01948710325
Twitter: @WelshamptonSch **Email:** admin@welshampton.shropshire.sch.uk **Website:** www.welshamptonceprimary.co.uk

Class Dojo Class Champions

Willow Class

Ivy and Maisie

Beech Class

Theo L and Zoe

Shining Stars of the Week

Strength

'Be strong and courageous! Do not be afraid or discouraged.'
Joshua 1:9

Willow Class

Albie for his positive attitude

Beech Class

Martha for amazing English work

Oak Class

Harry for his revision in SATs

Outside Achievements

Michael D was the top goal scorer in football.

Bridgette, in gymnastics, has been able to pull up round on double bar.

Bobby gained his science badge in Beavers.

Have a wonderful weekend!

Yours sincerely,

Mr Ben Crompton



Key School Dates

May

13th May

24th May

SATs Week

Break Up for Half Term

June

3rd June

4th June

PD Day

Children Return to School

July

19th July

Break Up for Summer

Executive Headteacher: Mr Ben Crompton

Address: Welshampton Church of England Primary School, Welshampton, Shrewsbury SY12 0PG **Telephone:** 01948710325
Twitter: @WelshamptonSch **Email:** admin@welshampton.shropshire.sch.uk **Website:** www.welshamptonprimary.co.uk