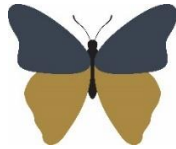


# Welshampton Church of England Primary School



**Growing together  
in strength, love and wisdom,  
we shine.**

**Newsletter  
Friday 3<sup>rd</sup> May 2024**

---

## **Message from the Head**

This week we have reminded the children of our three school rules: Be Safe, Be Ready, Be Respectful. These are three simple rules for everyone to follow and by doing so ensures school is a happy, kind and nurturing.

These rules also tie in with our school vision and values: 'Growing together in strength, love and wisdom, we shine' and it is wonderful to see these values being evident within our school community daily.

It is therefore with satisfaction that we can look forward to enjoying a well-deserved long weekend. We look forward to seeing all the children on Tuesday of next week.

## **Home School Journals**

Every child at Welshampton has a Home School Journal which is an invaluable link between home and school. Please take the time to record your child's reading at home in the journal as it helps inform the school of next steps and support that is place.

Reading really is the key to opening the whole world of learning for a child and the impact regular reading at home makes on a child's education is huge and should not be underestimated. Please continue supporting your child, regardless of age, on their reading journeys! by supporting child

## **Oteley Estate Open Garden**

This weekend Oteley is opening its gardens. Explore the 10-acre gardens running down to The Mere, with stunning views! Stroll through the walled kitchen garden, architectural features, and many old, interesting trees in our Woodland Walk. For more information visit: [www.oteley.com/our-events](http://www.oteley.com/our-events)

## **Cross-Country Champs**

Our children this week enjoyed a fantastic final cross-country event. All children ran brilliantly and cheered each other on all the way to the finish line; doing the school proud as always. Well done all!



## **300 Club**

The 300 club held their AGM and due to an amazing year of ticket sales they are delighted to have passed a cheque for a whopping £900 on to the Friends of Welshampton for them to now spend on the school.

In addition to this, they were also able to pass £900 on to the Parish Hall committee for improvements to the Parish Hall.


On behalf of the school, a huge thank you to 300 Club for their incredible generosity and to everyone for your continued support of the 300 Club. It really does make a big difference to the education of the children.

## **Donation Thank You**


We have a couple of 'thank yous' to parents this week. Firstly, to Kelly Own for donating some fabulous books to the school and also to Carolyn Lipson for the donation of two balance bikes. We are sure both donations will get plenty of use over the coming months and years! Thank you.

**Executive Headteacher:** Mr Ben Crompton

**Address:** Welshampton Church of England Primary School, Welshampton, Shrewsbury SY12 0PG **Telephone:** 01948710325  
**Twitter:** @WelshamptonSch **Email:** admin@welshampton.shropshire.sch.uk **Website:** [www.welshamptonceprimary.co.uk](http://www.welshamptonceprimary.co.uk)



**WHITCHURCH AMATEUR OPERATIC AND DRAMATIC SOCIETY**  
PRESENT



# THE WIND IN THE WILLOWS

A MUSICAL PLAY BASED ON THE KENNETH GRAHAME'S NOVEL  
BOOK AND LYRICS BY WILLIS HALL  
MUSIC BY DENIS KING


AT SIR JOHN TALBOTS SCHOOL  
WEDNESDAY 29TH TO FRIDAY 31ST MAY @ 7PM  
THURSDAY 30TH @ 1PM SATURDAY 1ST JUNE @ 4PM



This amateur production of THE WIND IN THE WILLOWS is presented by arrangement with Concord Theatricals Ltd. [www.concordtheatricals.co.uk](http://www.concordtheatricals.co.uk)

**TICKETS FROM £12.00**

**WWW.WAODS.NET\***  
0333 666 3366\*  
WHITCHURCH TOWN COUNCIL HUB (OPENING APRIL)  
WAODSBOXOFFICE@GMAIL.COM



WEBSITE



TICKETS\*

REGISTERED CHARITY NO: 1074472 \*BOOKING FEE APPLICABLE

### Weekly Attendance

Willow Class - 97% ★★

Beech Class - 90% ★

Oak Class - 98% ★★★

Average = 95%

Our school target is 97%

### Pen Licence Awards

Connie, Kaden & Zoe

### Class Dojo Class Champions

#### Willow Class

Arthur, Emily P & Maisie

#### Beech Class

Bella & Sophia

#### Oak Class

Jessica & Lilly

### Shining Stars of the Week

#### Strength

'Be strong and courageous! Do not be afraid or discouraged.'  
Joshua 1:9

#### Willow Class

Tom for his amazing work, especially in RE.

#### Beech Class

Theo L for being an overall superstar.

#### Oak Class

Elise for her amazing writing.

### Outside Achievements

Euan was awarded a trophy for his drama work.

Mia came 3rd in the overall Year 5/6 category in her cross-country event.

Mila gained a trophy for being 'Gymnast of the Day'

Ava has been selected to play Shropshire U11s at Loughborough University

Congratulations all!

Have a wonderful – long - weekend!

Yours sincerely,

Mr Ben Crompton



**WELSHAMPTON**  
Church of England Primary School

## TESTIMONIAL

“ The caring and supportive teaching staff ensure that our daughter works to the best of her ability. The small class sizes and friendly faces help her to enjoy coming to school everyday.

Let Your Light Shine

**Executive Headteacher:** Mr Ben Crompton

**Address:** Welshampton Church of England Primary School, Welshampton, Shrewsbury SY12 0PG **Telephone:** 01948710325  
**Twitter:** @WelshamptonSch **Email:** admin@welshampton.shropshire.sch.uk **Website:** [www.welshamptonceprimary.co.uk](http://www.welshamptonceprimary.co.uk)

## Key School Dates

### May

13<sup>th</sup> May

SATs Week

24<sup>th</sup> May

Break Up for Half Term

### June

3<sup>rd</sup> June

PD Day

4<sup>th</sup> June

Children Return to School

### July

19<sup>th</sup> July

Break Up for Summer



Welshampton CE Primary School

**Nursery Now Open**

Places available from 3 Years

Contact us to arrange a visit T: 01948 710325  
E: [admin@welshampton.shropshire.sch.uk](mailto:admin@welshampton.shropshire.sch.uk)  
W: [welshamptonceprimary.co.uk](http://welshamptonceprimary.co.uk)

7-4.30am to 5.30pm

Let Your Light SHINE

The advertisement features a young child with their mouth open, holding a large carrot. The school logo is in the top left corner, and the 'SHINE' logo is in the bottom right corner.

**Executive Headteacher:** Mr Ben Crompton

**Address:** Welshampton Church of England Primary School, Welshampton, Shrewsbury SY12 0PG **Telephone:** 01948710325  
**Twitter:** @WelshamptonSch **Email:** [admin@welshampton.shropshire.sch.uk](mailto:admin@welshampton.shropshire.sch.uk) **Website:** [www.welshamptonceprimary.co.uk](http://www.welshamptonceprimary.co.uk)