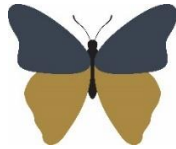


Welshampton Church of England Primary School



Growing together
in strength, love and wisdom,
we shine.

Newsletter
Friday 15th March 2024

Message from the Head

Today has been Comic Relief Day and it was great to see so many children with crazy hair... and even a full takeaway!



It was also lovely to see the Wonky Cakes which arrived with the children! Some outstanding work and a decision on the winner has been giving staff headaches all day... however, the winner has been decided and Team Dimelow take the crown this year and 20 Dojos, with Connie, Euan and the Lipsons all being highly commended with the reward of 10 house points each. Thank you to everyone who brought in cakes – they were great to both look at and eat!

Overall, today the school has made £118.75 for Comic Relief. Thank you all for your generous donations.

Executive Headteacher: Mr Ben Crompton

Address: Welshampton Church of England Primary School, Welshampton, Shrewsbury SY12 0PG **Telephone:** 01948710325
Twitter: @WelshamptonSch **Email:** admin@welshampton.shropshire.sch.uk **Website:** www.welshamptonceprimary.co.uk

Easter Bonnet Competition



Easter Service Reminder

Parents are welcome to join us at church on Friday 22nd March at 2:15pm to share with us our Easter celebrations. This service will be a more traditional church service which will be led by some of our older children. The service will finish with our weekly Celebration Worship.

Clive Cross-Country Tomorrow

Clive Cross-Country will be held tomorrow morning at 10am. It promises to be a great success, with a morning of running, bacon sandwiches, making friends and great teamwork. Mrs Liley will be there from 9:40am to meet, greet and support our children.

To end the morning, there will also be a family fun run, where children and adults of all ages can cheer each other on. Don't miss out on this fun-filled family event!

Parents Evening

This week parents had the chance to come into school and meet with teachers to talk about your child's progress and time at school. We hope you found these meetings useful and informative. However, if you felt you didn't have enough time to discuss something specific, please get in touch and our teachers will be more than willing to meet with you again.

Wraparound Care and School Club Payments

Effective from after the Easter break, there will be some changes to the payment process for wraparound care at Welshampton.

Our school administration have been facing ongoing difficulties in collecting payments for school clubs when not booked on the School Money system or booked in person on an ad hoc basis. This is resulting in significant time and effort dedicated to seeking and receiving payment from parents to avoid significant arrears. Therefore, going forwards, all club places at Welshampton will need to be paid for either on the School Money app or when a booking is made; we are able to take card payments over the phone or in person. Places can only be reserved once payment has been received by the school.

Due to staffing ratios, we do have a limited number of places which will be reserved on a first come first served basis, however, we will always do our best to accommodate late bookings as we understand that sometimes arrangements can change. Payments must be made at the time of booking.

I understand this may cause some inconvenience, but it is necessary to reduce alleviate the administrative burden being faced.

Should you require assistance or if you have any concerns regarding this change, please do not hesitate to contact our administration team. We will be more than willing to assist you in clarifying any queries or resolving any issues you may have.

Oak Class Inspire Afternoon

It was fantastic to welcome so many parents into Oak Class this afternoon to support the children in making pop-up books for our younger children. Some great work done by all!



Executive Headteacher: Mr Ben Crompton

Address: Welshampton Church of England Primary School, Welshampton, Shrewsbury SY12 0PG **Telephone:** 01948710325
Twitter: @WelshamptonSch **Email:** admin@welshampton.shropshire.sch.uk **Website:** www.welshamptonceprimary.co.uk

Easter Bunny Challenge

Our fantastic Welshampton School Friends are busy getting ready for Easter and have set the children a challenge! Will you be the lucky winner and take home a Cadbury's Easter Bundle?!



Key Stage One Indoor Athletics

We took a team of six year 3 children to Criftings Primary School to participate in an indoor athletics competition. Miss Edge accompanied them and was delighted with their teamwork, competitive edge and impeccable behaviour.

They did so well that they are this week's **Headteacher Award** winners! Well done to all.

Attendance

Willow Class - 95% ★★
Beech Class - 100% ★★★★★
Oak Class - 99% ★★★

Average = **98%**

Well done everyone! Our school target is 97%

Shining Stars of the Week Strength

'Be strong and courageous! Do not be afraid or discouraged.'
Joshua 1:9

Willow Class

Arthur for his soaring confidence.

Beech Class

Henry for his perseverance with his fraction work.

Oak Class

Evie F for her determination with her maths this week

Class Dojo Award Winners

This week our champs are:

Elara, Seren, James, Rosie, Theo O,
Maisie, Lilly, Jessica, Evelyn C

Outside Achievements

Mia for not only representing Shropshire in Athletics but also doing incredibly well! As was shared in the Mother's Day service last week, we are very proud of Mia's achievements.

Bobbie has this week been invested into Beavers in Oswestry. We hope you enjoy Bobbie!

Have a wonderful weekend!

Yours sincerely,
Mr Ben Crompton



Key School Dates

March

22nd March

Easter Service

9:15am – Parents Welcome
Break up from school

April

8th April

16th April

Return to school

Chill Factor Beech Class Trip

The logo for Shropshire family Information Service, featuring the word 'family' in a large, colorful font with 'Shropshire Information Service' written below it.

Hello from the **Family Information Service** (FIS for short).
Our job is to give you the info and resources you need to help your family life run a little smoother. We can help with:

- Childcare - finding it and advice on paying for it
- Local baby and toddler groups
- Events, activities, and fun things to do in the school holidays,
- Support for parents and families

We cover everything and anything to do with family life, so if you have a question, chances are we'll be able to help, or if we can't, we'll point you in the direction of someone who can.

Follow us on social media for all the latest news and info.

An illustration of a woman and a child standing together. The woman is holding a smartphone. There are speech bubbles around them with the text: 'Childcare', 'Family support', and 'Things to do and places to go'. A smartphone in the foreground shows the 'family' logo.

[@ShropshireFamilyInfo](#) [@ShropshireFamilyInfo](#) [@ShropFamilyInfo](#)

Executive Headteacher: Mr Ben Crompton

Address: Welshampton Church of England Primary School, Welshampton, Shrewsbury SY12 0PG **Telephone:** 01948710325
Twitter: @WelshamptonSch **Email:** admin@welshampton.shropshire.sch.uk **Website:** www.welshamptonceprimary.co.uk