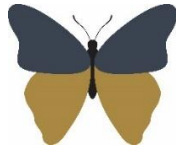


# Welshampton Church of England Primary School



**Growing together  
in strength, love and wisdom,  
we shine.**

**Newsletter  
Friday 19<sup>th</sup> January 2024**

### Message from the Head

It has been another busy but lovely week at Welshampton. The children have settled back to school beautifully since the return to school after Christmas and it is a pleasure to walk around the school and see the infectious enthusiasm for learning in all our children... and staff!

We are also working hard to promote our new nursery provision with Kiera showing all passing motorists her best crocodile impression on our new banner at the front of the school. Please spread the word.



### Sunset Club Timetable

Day of the Week	Club
Monday	Muddy Monday
Tuesday	Board Games
Wednesday	Art & Craft
Thursday	Young Engineers
Friday	Chill Out/Sports – Try Something New

If anyone would like to 'recycle' a board game from home, please bring it in and we will add it to our selection! Thank you.

### ActivSports Football Camp

Activsports will be hosting a Football camp/ holiday club during the upcoming February half term at St Peters Primary School in Wem. Starting on Monday 12th February and finishing on Friday 16th February, the day starts at 8:30am and finishes at 3:30pm each day.

For further information and how to book/ pay please click on the link.

<https://forms.office.com/r/6DptYTTfy7>

### Music Lessons

Is your child interested in learning a musical instrument within school?

Should there be enough interest, external teachers are available to teach the following instruments: Violin, Keyboard, Flute, Clarinet, Saxophone & Oboe.

If you would like more information on costs, timings etc, please contact the school office.

### Census Day Lunch

Thank you to all those extra children who enjoyed Build A Burger day yesterday. It was greatly appreciated and will boost funding for the school. Many thanks.

### Welshampton Pantomime

**Executive Headteacher:** Mr Ben Crompton

**Address:** Welshampton Church of England Primary School, Welshampton, Shrewsbury SY12 0PG **Telephone:** 01948710325  
**Twitter:** @WelshamptonSch **Email:** admin@welshampton.shropshire.sch.uk **Website:** [www.welshamptonceprimary.co.uk](http://www.welshamptonceprimary.co.uk)

Like | Follow | Share | Invite

# Shropshire Community Clothing Bank

**Free clothing events across Shropshire**

Looking for donations of clothes for the event and donations of other things such as storage, clothes rails etc

VOLUNTEERS needed to help run the events (clothes sorting, monitoring) and to assist in event jobs, pick ups/drop off, communications, social media etc

Email us: [shropshireccb@outlook.com](mailto:shropshireccb@outlook.com)

Send us a message via Messenger [facebook.com/shropshirecommunityclothingbank](https://facebook.com/shropshirecommunityclothingbank)

The Cellar Church, Ellesmere invites you to a

## Bright Sparks Party

During February 2024 half term.  
Free fun for primary school age children  
Reception to Year 6

**At Ellesmere Rangers Football Club**  
**Wednesday 14<sup>th</sup> February 2024**  
**3.30-5.30pm**

To register scan the QR code opposite or collect a registration form from

**More Than a Sundae, Cross Street**

### 300 Club Congratulations!

Huge congratulations to the January 300 club winners:

**£50 Gwen Barnett**

**£10 Moolah**

**£10 Jean Clarke**

**£10 Heather Rodenhurst**

By now you should all have received your NEW 300 club tickets. These tickets are £9 each for the year and give you the opportunity to win one of 4 monthly prizes.

If you would like to buy your ticket/s please return your ticket stub and payment to either Karen Darbey, Carolyn Lipson, Julie Bridges or the school office by the end of term. If you would not like to use your tickets however, then can you please return the whole ticket so that it can be resold.

Last year we raised £700 for the school and £700 for the parish hall from ticket sales. Let's see if we can beat that this year!!

Thank you for your continued support.

The 300 Club Team

### Late Arrivals

A reminder that the school day starts at 8:45am. We are currently getting too many children who are late. This is monitored by our Educational Welfare Officer visits who will identify and contact those 'repeat offenders'.

Please do your very best to get to school on time as the children do start their learning at 8:45am daily.

### Attendance

Willow - 99% ★★★★★

Beech - 98% ★★★

Oak - 96% ★

Average = 97% which is our target, well done all!

### House Point Calculator

Brimstone 136

Grayling 125

Peacock 112

**Executive Headteacher: Mr Ben Crompton**

**Address:** Welshampton Church of England Primary School, Welshampton, Shrewsbury SY12 0PG **Telephone:** 01948710325

**Twitter:** @WelshamptonSch **Email:** [admin@welshampton.shropshire.sch.uk](mailto:admin@welshampton.shropshire.sch.uk) **Website:** [www.welshamptonceprimary.co.uk](http://www.welshamptonceprimary.co.uk)

**Shining Stars of the Week**  
**Love**

*'Love is patient. Love is kind. Love never fails.'*  
*1 Corinthians 13*

- Beech Class Will for his enthusiasm in science.
- Willow Class Elara for her work on 2D shapes.
- Oak Class Emily M for being so determined in maths.

**Class Dojo Stars**

- Beech Class Evie and Luke P
- Oak Class Ava, Emily O and Mia
- Willow Class Emily B

Have a wonderful weekend!

Yours sincerely,

Mr Ben Crompton

**Key Dates**  
**Key School Dates**

**February**

9<sup>th</sup> February Break up from school  
19<sup>th</sup> February Return to school

**March**

22<sup>nd</sup> March Break up from school

**April**

8<sup>th</sup> April Return to school



 **Welshampton CE Primary School**

**Nursery Now Open**

**Places available from 3 Years**

Contact us to arrange a visit T: 01948 710325  
E: [admin@welshampton.shropshire.sch.uk](mailto:admin@welshampton.shropshire.sch.uk)  
W: [welshamptonceprimary.co.uk](http://welshamptonceprimary.co.uk)

7:45am to 5:30pm

Let Your Light  
**SHINE**

**Executive Headteacher:** Mr Ben Crompton

**Address:** Welshampton Church of England Primary School, Welshampton, Shrewsbury SY12 0PG **Telephone:** 01948710325  
**Twitter:** @WelshamptonSch **Email:** [admin@welshampton.shropshire.sch.uk](mailto:admin@welshampton.shropshire.sch.uk) **Website:** [www.welshamptonceprimary.co.uk](http://www.welshamptonceprimary.co.uk)