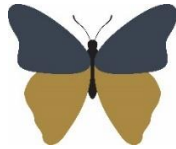


Welshampton Church of England Primary School



**Growing together
in strength, love and wisdom,
we shine.**

**Newsletter
Friday 20th October 2023**

Message from the Head

Well done and thank you to all those who made it into school today – we had an almost full school which was testament to the efforts – and detours – everyone made. Thank you!

A reminder that we are in school next week and half term is the week after - October 30th to November 3rd. However, school we be closed to children on Friday 27th October for a staff PD Day therefore the children's last day in school is Thursday 26th October.

Parent Governor

Would you like to play a key role in moving the school forward? As a parent governor, you would work with the Governing Body to ensure it effectively carries its duties and also play a vital role in ensuring that the Governing Body is connected with, and is aware of the views of, parents and the local community. If you are interested, please read the attached letter and get in touch accordingly.

Absence Reporting

In the event of absence, please contact the school office directly. Class Dojo should not be used to report absences or appointments. Many thanks.

Pastoral Support

Congratulations to Mrs Hordern who has officially gained her ELSA (Emotional Literacy Support Assistant) qualifications following weeks of training. The ELSA qualifications which will be used as part of her Pastoral Lead role across the Federation. This role is to support the children's emotional development and help them cope with life's challenges. ELSAs will also help children and young people to find solutions to problems they might have.

Tag Rugby Titans



Our Year 5 & 6 tag rugby team had a super time at the tournament held at Oswestry Rugby Club. We played four games against other primary schools, and although we didn't make it into the semi-finals, all the children improved their tagging and teamwork skills.

Behaviour and sportsmanship were exemplary as were determination and the ability to laugh and have fun despite challenges. Well done, team!



Executive Headteacher: Mr Ben Crompton

Address: Welshampton Church of England Primary School, Welshampton, Shrewsbury SY12 0PG **Telephone:** 01948710325
Twitter: @WelshamptonSch **Email:** admin@welshampton.shropshire.sch.uk **Website:** www.welshamptonceprimary.co.uk

U11s Girls Football

Yesterday our U11 girls football team headed over to Newtown on an extremely wet afternoon! Despite the challenging conditions – when standing up was an achievement in itself - the team played with great determination and teamwork. Despite losing the game, the team played with a smile on their face throughout! Well done all.

School Social Media

A reminder that we now have an Official School Facebook page which will allow us to share and celebrate all the wonderful things we do at school with the outside world.

Thank you to those of you who have completed the permission form which have been circulated and a reminder to those who haven't, please do so at your earliest convenience.

D.I.S.C.O. Time – Tonight!

WELSHAMPTON FRIENDS

HALF TERM DISCO

MUSIC, GAMES AND LOTS OF FUN

FRIDAY 20TH OCTOBER
WELSHAMPTON PARISH HALL
3.30 PM – 5.30 PM

£3 PER TICKET
INCLUDES DRINKS AND SNACKS

Siblings Welcome

Stars of the Week

Willow Class Albie for amazing writing and fabulous artwork.

Beech Class Henry for his super descriptive Big Write!

Oak Class Theo S for demonstrating the most amazing resilience this week

Class Dojos Top 3

Willow Class Maisie, Ivy and Teddy

Beech Class Connie, Luke P and Zoe

Oak Class Emily M, Evelyn and Zain

House Points

Brimstone 687
Grayling 739
Peacock 693

Outside Achievements

Will Robinson for being Man of the Match in last week's rugby match

Mila earned a trophy for being 'Gymnast of the Day!'

Congratulations both!

Have a wonderful weekend!

Yours sincerely,
Mr Ben Crompton

Key Dates

October

Friday 27th PD Day
Monday 31st Half term

November

Monday 7th Children return to school
Monday 20th Assessment Week
Monday 27th Parents Evening
Tuesday 28th Parents Evening

Executive Headteacher: Mr Ben Crompton

Address: Welshampton Church of England Primary School, Welshampton, Shrewsbury SY12 0PG **Telephone:** 01948710325
Twitter: @WelshamptonSch **Email:** admin@welshampton.shropshire.sch.uk **Website:** www.welshamptonceprimary.co.uk

OCTOBER HALF TERM SPOOKY SCIENCE

MONDAY 30TH OCT - FRIDAY 3RD NOV

1PM - 2:30PM



THIS OCTOBER HALF TERM, JOIN IN WITH SOME SPOOKY SCIENCE! MAKE A CUP SCREAM, A FACE JUMP ONTO A PUMPKIN AND A PARACHUTE THAT WILL SAFELY LET A SPIDER GET TO THE GROUND. MAKE A PAPER SKELETON TO TAKE HOME AND MUCH MORE!



£4.50 PER ACCOMPANIED 4-11 YEAR OLD

MEMBERS PRICE - £4.05

BOOKING ESSENTIAL, CALL 01588676060



**Shropshire Hills
Discovery Centre**
the home of Grow Cook Learn

www.shropshirehillsdiscoverycentre.co.uk
info@shropshirehillsdiscoverycentre.co.uk / 01588 676060
School Road, Craven Arms SY7 9RS
Grow Cook Learn, a registered charity: 1158795



TENNIS CAMP

OCTOBER HALF TERM
at Moreton Hall



OCTOBER 2023
Monday 23 Oct
Tuesday 24 Oct
Monday 30 Oct
Tuesday 31 Oct



Camp Day - £18.00
9:00am - 12:00pm

Early Drop Off - £22.50
8:00am - 12:00pm

Camp Day + Holiday Club - £39.00
8:00am - 6:00pm
(includes 2 hot meals (lunch and tea), snacks, drinks
and afternoon swimming)

Reception - Year 8

All Abilities Welcome

Please provide your own:

- Drink in a named water bottle
- Snacks
- Suitable sports clothing
- Trainers
- Your own Tennis racket (if possible)

Book Now!

www.moretonhall.org/holiday-club