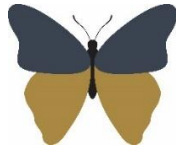


# Welshampton Church of England Primary School



**Growing together  
in strength, love and wisdom,  
we shine.**

**Newsletter  
Friday 21<sup>st</sup> July 2023**

---

## **Message from the Head**

As we reach the end of the school year, we are grateful for what has gone before and look forward with anticipation to the future.

As children reach the end of Year 6, there is often a great deal of emotion – and for good reason. It is the end of a journey, the end of their first real part of life – done and completed.

The role of a primary school is to ensure that children are given the academic and social foundations from which they can build moving forwards – the roots to grow and wings to fly. Our Year 6 children should look forward with great excitement knowing that they have both.

We are so proud of them and know they will go on to great things in the future. Good luck to all our leavers – look forward and be brilliant!

## **Staff Thank You**

We are so fortunate to have such wonderful staff at Welshampton and I must thank each and every one of them for their continued dedication and commitment to the children of the school.

Their work makes the school such a special place and enables the children to thrive in such a positive and nurturing environment.

We look forward to welcoming Miss Truswell and Miss Kerr to our staff team next year and are sure they will fit in seamlessly.

## **Extensive Summer Works**

As the school closes for the children, work will continue at school throughout the summer to further enhance the environment.

Significant amount of funds are being invested in the school to further enhance the environment , facilities and resources for our children.

Works will take place both internally and externally.

Internally, we will be decorating our toilets and revamping Mrs Liley's cupboard – it will be better than it sounds! We will also be investing in 30 new laptop devices to support children in their learning.

Externally, a six-lane 45m rubberised running track is to be installed on our school field in addition to a new pathway. We will also be re-levelling and re-seeding the main part of the field to ensure we have a playing field which is fit for purpose.

This is an exciting time for the school and the work that is being completed is part of the on-going drive to give the children the best possible education within an aspirational environment.

## **Preparation for Next Year**

I am sure some of you will be purchasing new school bags over the summer. If doing so, please consider their size as we only have a limited amount of space to store them.

New PE kits will be given to the children in the first week back after the summer holidays and they will be able to wear these all day on PE days.

## **Second Hand Uniform**

Please see attached letter regarding Second Hand Uniform and a Hope House initiative from the School Shop.

## **Summer Activities**

Please see the numerous flyers at the end of the newsletter pointing you in the direction of many summer holiday children's activities which are happening in the local area.

**Executive Headteacher:** Mr Ben Crompton

**Address:** Welshampton Church of England Primary School, Welshampton, Shrewsbury SY12 0PG **Telephone:** 01948710325  
**Twitter:** @WelshamptonSch **Email:** admin@welshampton.shropshire.sch.uk **Website:** [www.welshamptonceprimary.co.uk](http://www.welshamptonceprimary.co.uk)

### Outside Achievements

Congratulations to Ava, Theo O, and Will for being selected to play in their first competitive cricket match for Frankton Foxes.

They played against The Beacon in Shrewsbury and won! All three of them demonstrated fantastic skills in bowling, fielding, and batting. Well done!



On behalf of the staff and governors at Welshampton, have a wonderful summer holiday and I will see you the children back in school on Wednesday 6<sup>th</sup> September!

Yours sincerely,  
Mr Ben Crompton

### Key Dates

24 <sup>th</sup> July	PD Day
25 <sup>th</sup> July	PD Day
26 <sup>th</sup> July – 3 <sup>rd</sup> September	Summer Holidays
4 <sup>th</sup> September	PD Day
5 <sup>th</sup> September	PD Day
6 <sup>th</sup> September	Return to school

**Executive Headteacher:** Mr Ben Crompton

**Address:** Welshampton Church of England Primary School, Welshampton, Shrewsbury SY12 0PG **Telephone:** 01948710325  
**Twitter:** @WelshamptonSch **Email:** admin@welshampton.shropshire.sch.uk **Website:** [www.welshamptonceprimary.co.uk](http://www.welshamptonceprimary.co.uk)



Relationships can be difficult, complicated, fun, satisfying, exciting, annoying bring out the best in us and bring out the worst in us. We are often in one, but we don't often spend much time on them. So here is your chance to make the time and come to one of our workshops.

- Do you feel your relationship needs some attention?
- Do you feel you are drifting a bit lately or things have been difficult?
- Would you like to meet with others and share ideas and thoughts?
- Are you looking for a way forward?

## ***WORKING ON YOUR RELATIONSHIP***

Why not join us for our 4-week workshop with 2 hours session each week  
There are 2 different workshops on offer this Autumn:

**Starts on Thursday 28<sup>th</sup> September 2023**

**from 10.00am to 12.00pm**

**at Helena Lane Community Centre, 20 Hamlet Rd, Ludlow SY8 2NP**

**or**

**Starts on Thursday 16<sup>th</sup> November 2023**

**from 10.00am to 12.00pm**

**at The Centre, Oak Street, Oswestry, SY11 1LW**

To book a place on one of our workshops or for further information on the workshops we run please contact the Parenting Team by:

Emailing [Parenting.team@shropshire.gov.uk](mailto:Parenting.team@shropshire.gov.uk)

Or call us on 01743 250950





# Summer FOOTBALL CAMP at Moreton Hall

SUMMER 2023

Everyday  
Monday 24 July -  
Friday 1 Sept



Camp Day - £17.50  
10:00am - 3:00pm

Early Drop Off - £23.50  
8:00am - 3:00pm

Camp Day + Holiday Club - £39.00  
8:00am - 6:00pm (includes hot lunch, snacks, tea  
& afternoon swimming)

## Reception - Year 8

All Abilities Welcome

Please provide your own:

- Drink in a named water bottle
- Snacks
- Suitable sports clothing
- Trainers / Football boots

Book Now!

[www.moretonhall.org/football-camp](http://www.moretonhall.org/football-camp)



# Whitchurch RFC Girls Rugby Training

## Calling all **GIRLS**



**When:** Every **TUESDAY** 18.00-19.00

**Where:** 21 Edgeley Rd, Whitchurch, **SY13 1EU**

**Who:** **GIRLS** aged from 9-18 years old

**Kit:** **YOU** and a water bottle

**Experience:** **ALL** abilities welcome

Teamwork • Respect • Enjoyment  
• Discipline • Sportsmanship



## **SUMMER RUGBY CAMP**



*with coaching from 1 Star Coach every day*

### **Whitchurch RFC**

**21<sup>st</sup>, 22<sup>nd</sup>, 23<sup>rd</sup> & 24<sup>th</sup> August 2023**

Age groups U6-U16 (Boys and Girls)

Please book in advance through  
[www.touchlinesportscoaching.com/book-rugby-camps](http://www.touchlinesportscoaching.com/book-rugby-camps)

Price is £30 per day or £100 for the 4 days

**PLEASE BOOK IN ADVANCE**

Timings: 9am Register, Rugby 10am-3pm

**Bespoke coaching for age group needs**



**TOUCHLINE**   
SPORTS COACHING LTD  
[www.touchlinesportscoaching.com](http://www.touchlinesportscoaching.com)

## **Rugby for all!**

Mixed training starting on  
1st Sunday in September  
from age 6 and if girls  
would like to train on their  
own we have girls only  
rugby on a Tuesday evening  
starting back in September.



# Summer TENNIS CAMP at Moreton Hall



SUMMER 2023  
12 - 14 July  
18 - 20 July  
8 - 10 August  
15 - 17 August  
22 - 24 August



Camp Day - £18.00  
9:00am - 12:00pm

Early Drop Off - £22.50  
8:00am - 12:00pm

Camp Day + Holiday Club - £39.00  
8:00am - 6:00pm  
(includes hot lunch, tea and refreshments)

## Reception - Year 8

All Abilities Welcome

Please provide your own:

- Drink in a named water bottle
- Snacks
- Suitable sports clothing
- Trainers
- Your own Tennis racket (if possible)

Book Now!

[www.moretonhall.org/holiday-club](http://www.moretonhall.org/holiday-club)



Summer Holiday Fun and Food in Shropshire

## ***Book Now!***

Spaces are available on the Summer HAF programme.

From 25 July to 1 September 2023, eligible children and young people are invited to take part in a range of fun activities, happening at 57 holiday clubs from across the county.

To find out more please go to:  
[www.shropshire.gov.uk/haf](http://www.shropshire.gov.uk/haf)

Shropshire  
**HAF**  
Holiday Activities and Food



Hello from the **Family Information Service** (FIS for short).  
Our job is to give you the info and resources you need to help your family life run a little smoother. We can help with:

- Childcare - finding it and advice on paying for it
- Local baby and toddler groups
- Events, clubs, activities, and fun things to do in the school holidays, for all ages
- Getting parenting and family support
- Finding health and wellbeing support

We cover everything and anything to do with family life, so if you have a question, chances are we'll be able to help, or if we can't, we'll point you in the direction of someone who can.

**Follow us on social media for all the latest news and info.**



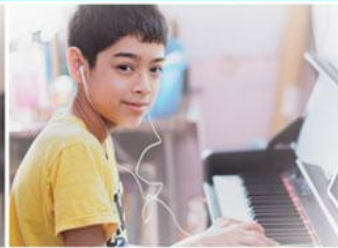
[www.shropshire.gov.uk/fis](http://www.shropshire.gov.uk/fis)



# 30-Minute 1:1 Music Lessons

Guitar | Drums | Piano | Vocals

ONLINE



- **FREE no-commitment taster**
- 1:1 weekly lessons = £17.50
- Discounts inc. holiday lessons
- **Childcare Vouchers accepted**
- Half-termly bookings
- **No waiting lists!**
- Watch back lesson recordings
- Weekly progress reports
- Inspirational tutors!
- After school & weekends (no missing curriculum time)



Contact us for your **FREE** lesson!

**Web:** [www.sammusicservice.com](http://www.sammusicservice.com)

**Email:** [lessons@sammusicservice.com](mailto:lessons@sammusicservice.com)

**Tel:** 0800 756 9411







For more info: [www.wembaptistchurch.co.uk](http://www.wembaptistchurch.co.uk)

**TOP SECRET**



IT'S FREE!

Age 4 - 11

9:15am at the Rec to  
12:30pm at Wem Baptist

**HOLIDAY  
BIBLE  
CLUB**



Tues 1st - Fri 4th  
August 2023

Games  
Crafts  
Songs

Quizzes  
Stories  
Spy Missions