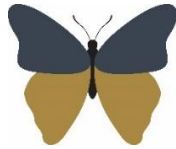


Welshampton Church of England Primary School



**Growing together
in strength, love and wisdom,
we shine.**

**Newsletter
Friday 13th October 2023**

Message from the Head

The children are the most important part of any school and Welshampton is no different. The importance of 'pupil voice' has never been more prioritised in education and as such, this year, we will be continuing with our school Houses of Parliament.

It has been wonderful to read the children's applications for roles in the School Cabinet and it gives me great pleasure to share with you our School Parliament for this academic year. We will meet formally every half term and certain children will be asked to complete various tasks throughout the year.

Welshampton House of Parliament



After receiving numerous applications for a variety of ministerial roles at school, I am pleased to share with you our School Parliament for 2023/24.

Prime Minister	Mia
Deputy Prime Minister	Emily O
Home Secretary	Emily M & Harry
Sports Ministers	Ava & Jess
Chancellor	Dyllon & Robin
Health & Wellbeing Minister	Lilly
Charity Ministers	Euan & Grace
Eco Minister	Abbie

Executive Headteacher: Mr Ben Crompton

Address: Welshampton Church of England Primary School, Welshampton, Shrewsbury SY12 0PG **Telephone:** 01948710325
Twitter: @WelshamptonSch **Email:** admin@welshampton.shropshire.sch.uk **Website:** www.welshamptonceprimary.co.uk

Parent Governor

Would you like to play a key role in moving the school forward? As a parent governor, you would work with the Governing Body to ensure it effectively carries its duties and also play a vital role in ensuring that the Governing Body is connected with, and is aware of the views of, parents and the local community.

If you are interested, please read the attached letter and get in touch accordingly.

D.I.S.C.O. Time!

WELSHAMPTON FRIENDS

HALF TERM DISCO

MUSIC, GAMES AND LOTS OF FUN

FRIDAY 20TH
OCTOBER
WELSHAMPTON
PARISH HALL
3.30 PM – 5.30
PM

£3 PER
TICKET
INCLUDES
DRINKS AND
SNACKS

Siblings Welcome

Safeguarding Attendance – EWO Update

This week we have been visited by the Education Welfare Officer (EWO) who monitors school attendance across the local authority. Attendance is a real focus for the Department for Education and Local Authority and our EWO reiterated the importance of attending school from both a safeguarding and academic perspective. It really is so important that children are in school as much as possible and we really appreciate your support in this as we target 97% attendance across the school year.

EVERY DAY COUNTS!

School and **future success** starts with good attendance!



Attendance

Oak Class are the attendance champions this week with 98% but as a whole school we had average attendance of 94%. Our school target is 97%.

School Social Media

We are about to launch an Official School Facebook page which will allow us to share and celebrate all the wonderful things we do at school with the outside world.

Please look out for a permission form which will be sent out as on this page we would like to share pictures of the children.

Shining Stars of the Week

- Willow Class** Ivy and Imy for working really hard in Phonics and always having a positive attitude
- Beech Class** Zoe for producing an amazing poem in English
- Oak Class** Mia for being an excellent role model and for always working hard

Class Dojos Top 3

- Willow Emma, Elara, and Michael
Beech Connie, Luke Dar and Zoe
Oak Dyllon, Evelyn and William

House Points

- Brimstone 591
Grayling 603
Peacock 577

Outside Achievements

Michael Darbey was player of the match for Wem's U7s Football Team. Well done Michael!

Have a wonderful weekend!

Yours sincerely,
Mr Ben Crompton

Key Dates

October

- Friday 27th PD Day
Monday 31st Half term

November

- Monday 7th Children return to school
Monday 20th Assessment Week
Monday 27th Parents Evening
Tuesday 28th Parents Evening

Executive Headteacher: Mr Ben Crompton

Address: Welshampton Church of England Primary School, Welshampton, Shrewsbury SY12 0PG **Telephone:** 01948710325
Twitter: @WelshamptonSch **Email:** admin@welshampton.shropshire.sch.uk **Website:** www.welshamptonceprimary.co.uk

OCTOBER HALF TERM SPOOKY SCIENCE

MONDAY 30TH OCT - FRIDAY 3RD NOV

1PM - 2:30PM



THIS OCTOBER HALF TERM, JOIN IN WITH SOME SPOOKY SCIENCE! MAKE A CUP SCREAM, A FACE JUMP ONTO A PUMPKIN AND A PARACHUTE THAT WILL SAFELY LET A SPIDER GET TO THE GROUND. MAKE A PAPER SKELETON TO TAKE HOME AND MUCH MORE!



£4.50 PER ACCOMPANIED 4-11 YEAR OLD

MEMBERS PRICE - £4.05

BOOKING ESSENTIAL, CALL 01588676060

**Shropshire Hills
Discovery Centre**
the home of Grow Cook Learn



www.shropshirehillsdiscoverycentre.co.uk
info@shropshirehillsdiscoverycentre.co.uk / 01588 676060
School Road, Craven Arms SY7 9RS
Grow Cook Learn, a registered charity: 1158795

